

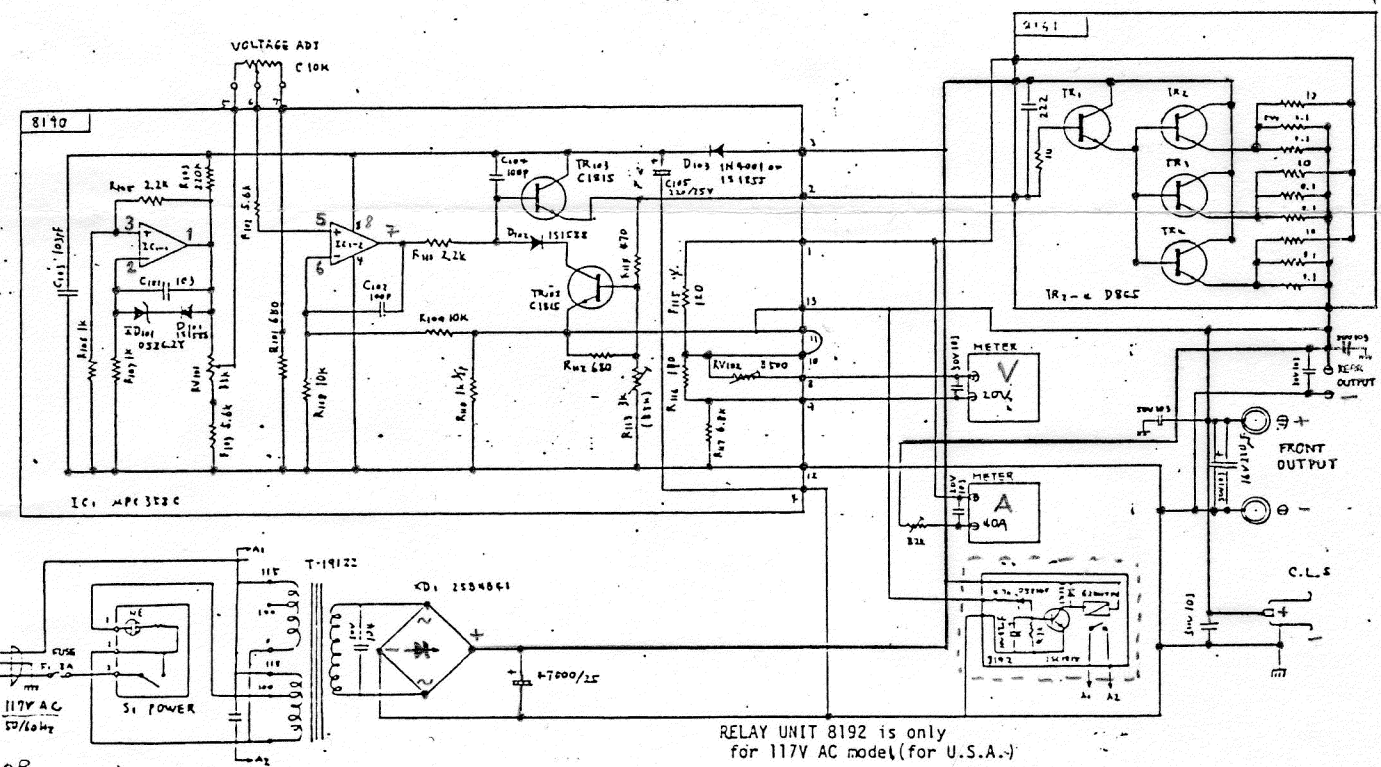
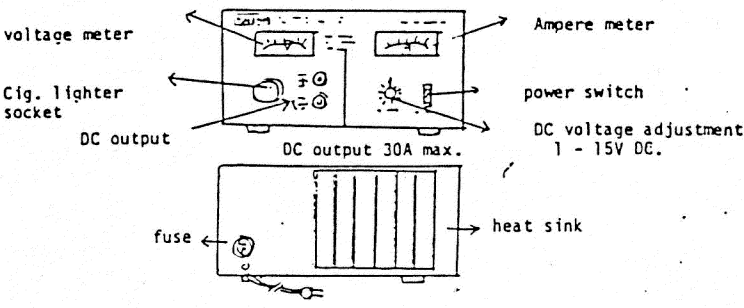
**DAIWA** - NEW DC POWER SUPPLY

Model PS - 30XMII

PS - 30XM II

- OUTPUT VOLTAGE: 1-15V DC variable.
- OUTPUT CURRENT: 13.8 V DC Max.30A. rated 24A.  
(30A max when 13.8V DC)..
- POWER SOURCE: 230V AC.
- unwanted ripple: better than 1m V.
- Voltage fluctuation: Better than 0.5%
- Dimensions: 280 x 140 x 205 mm
- Weight, net 9.7 Kgs approx.
- Protection device: Against over-load / short circuit etc.

Advice: Against a RF-interference ( in use with transceiver)  
insert 0.01mf capacitor between positive-terminal  
and negative-terminal of the output terminal, plu  
the power supply unit(PS-30XMII)to be grounded.



RELAY UNIT 8192 is only for 117V AC model (for U.S.A.)

MODEL PS-30XMII

U.S.A.

DAIWA ELECTRONIC CORPORATION.  
 1908 UNIT-A DEL AMO BLVD,  
 TORRANCE, CALIF 90501.  
 PHONE. 213-212-6057 and 6058.  
 FAX 213-212-0872

**DAIWA INDUSTRY CO., LTD.**  
 No.12, 2-Chome Kanda Tsukasa-Cho  
 Chiyoda-Ku, TOKYO 101 JAPAN  
 PHONE. 03-252-1234  
 TLX. J25608, FAX. 03-258-2332