

SPECIFICATION

MODEL

CX-600NL

IMPEDANCE / 50 Ohms.

VOLTAGE

ACTUATION DATA :

VOLTAGE :

Pull in 10Vdc - 14Vdc (12.0Vdc Nominal)

Drop out 3.0Vdc Min.

Current 126mA @12Vdc 20°C

Coil resistance ... 88 Ohms 10% @20°C

SWITCHING TIME

SWITCHING TIME :

Operate 20ms max.

Release 15ms max.

LIFE EXPECTANCY 1,000,000. Operation min.

MECHANICAL

MECHANICAL :

Contact arrangement SPDT

Switching operation Failsafe.

Operational temperature - 25°C to + 50°C (Max Temperature Rise:20c)

Weight Approx 240gs.

Mounting Two screws

Cable connections 3 N Type female connectors

ELECTRICAL CHARACTERISTICS

ELECTRICAL CHARACTERISTICS :

Frequency MHz	VSWR Max	Isolation -dB(min)	Ins.Loss -dB(max)	IN PUT
				RF Power KW(PEP)
50	1.03	60	0.07	2.0 CW
150	1.1	48	0.09	1.8 CW
500	1.15	35	0.1	1.5 CW
1000	1.2	28	0.15	1.0 CW

COIL CHARACTERISTICS

COIL CHARACTERISTICS :

Nominal Voltage

12Vdc

Voltage Range

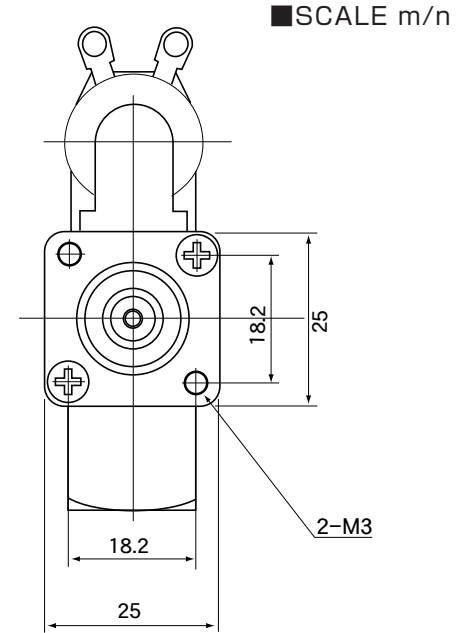
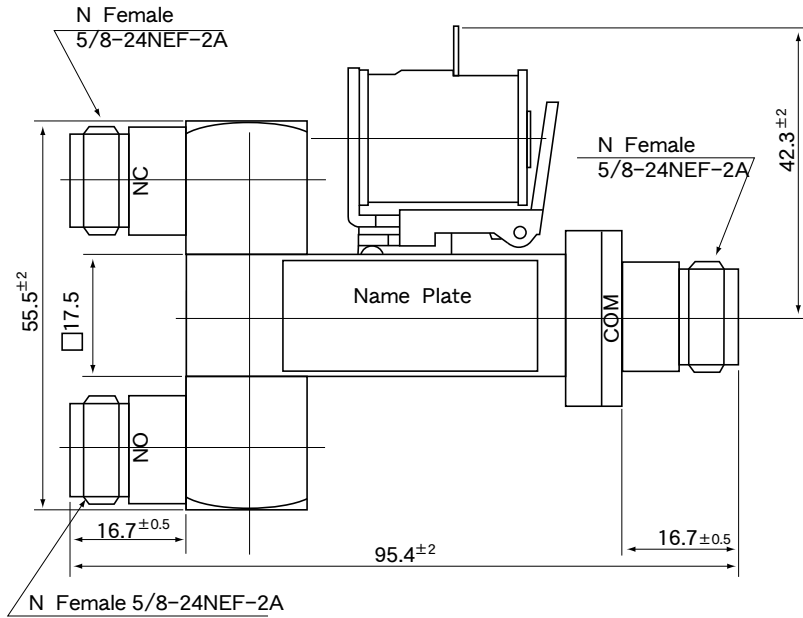
10Vdc - 14Vdc

Resistance Ohms

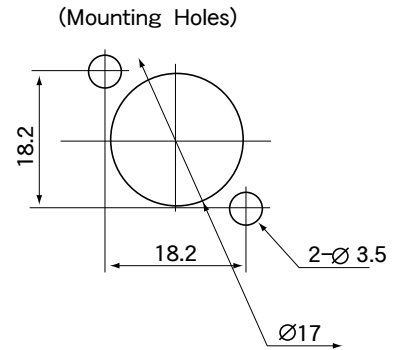
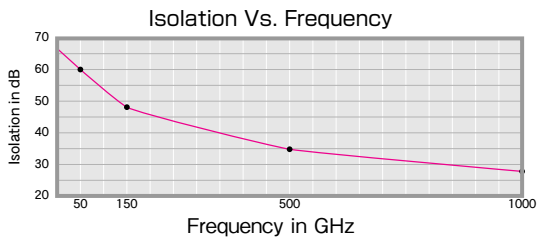
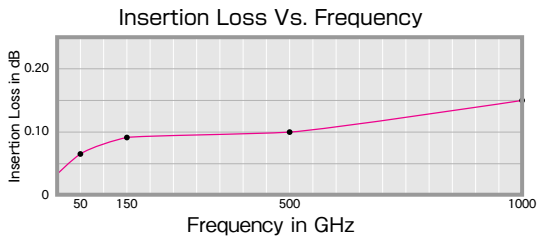
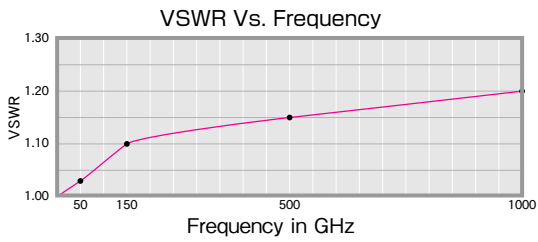
88 ±10% 20°C

Note : Other voltages are also available at option.

DIMENSIONS



Typical Operating Curves



Schematic

