

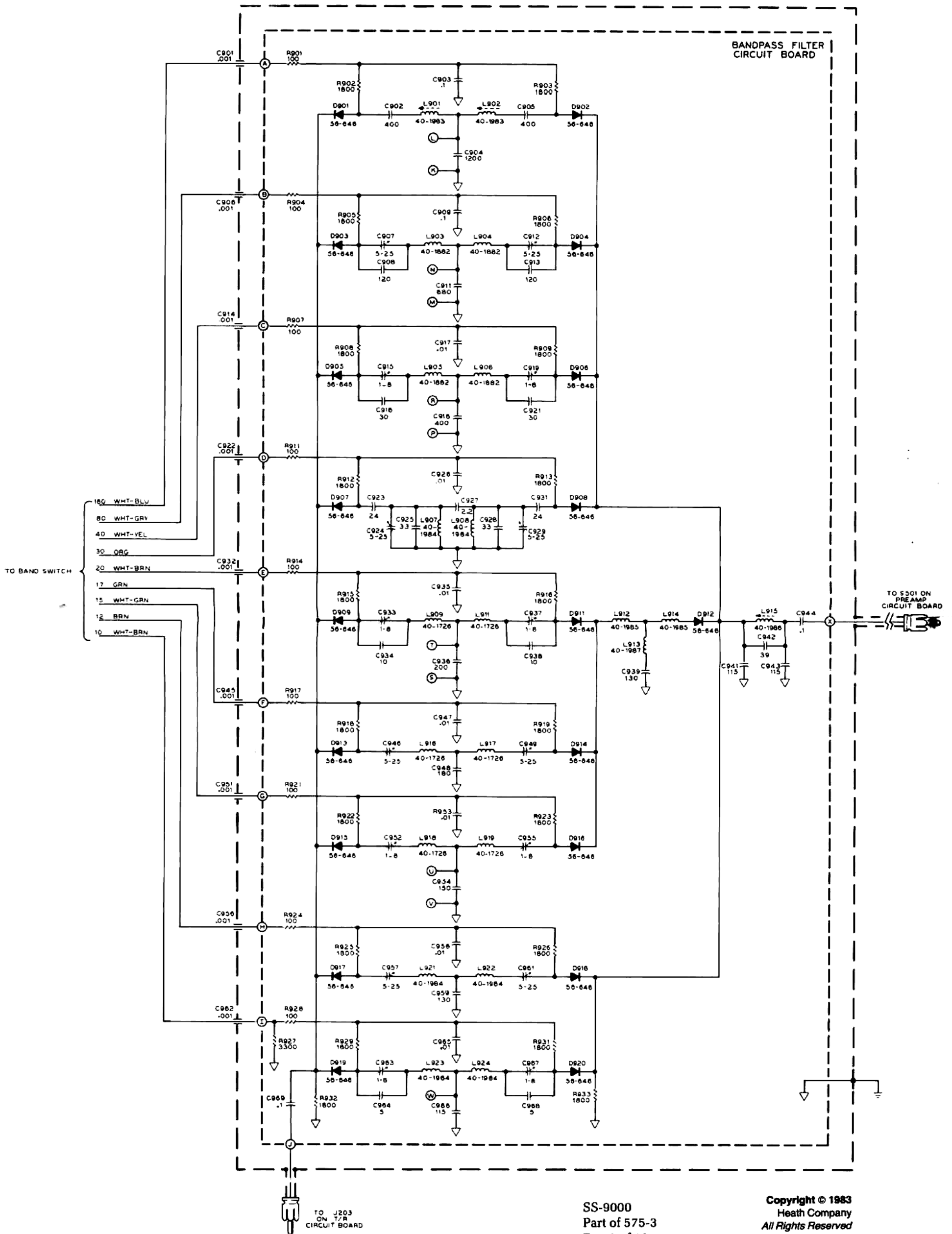
**SCHEMATIC OF THE  
HEATHKIT  
HF SYNTHESIZED TRANSCEIVER  
MODEL SS-9000**

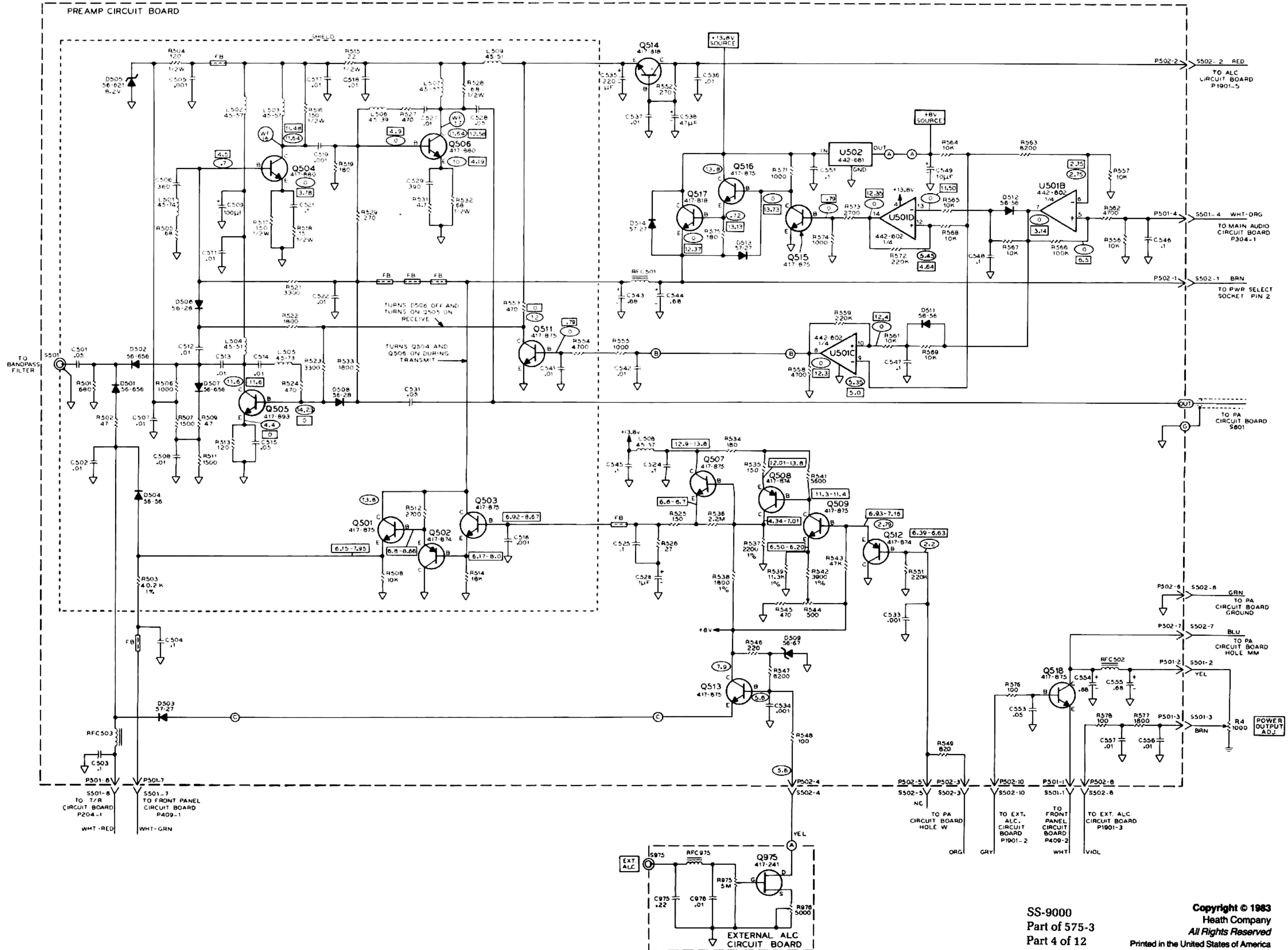
- NOTES:
- COMPONENT NUMBERS ARE IN THE FOLLOWING GROUPS:  
 001-999 PARTS MOUNTED ON THE CHASSIS.  
 101-199 PARTS MOUNTED ON THE SYNTHESIZER CIRCUIT BOARD.  
 201-299 PARTS MOUNTED ON THE TRANSMIT/RECEIVE CIRCUIT BOARD.  
 301-399 PARTS MOUNTED ON THE MAIN AUDIO CIRCUIT BOARD.  
 401-499 PARTS MOUNTED ON THE FRONT PANEL CIRCUIT BOARD.  
 501-599 PARTS MOUNTED ON THE PREAMP CIRCUIT BOARD.  
 601-699 PARTS MOUNTED ON THE POWER AMP CIRCUIT BOARD.  
 801-899 PARTS MOUNTED ON THE CONTROLLER CIRCUIT BOARD.  
 901-999 PARTS MOUNTED ON THE BANDPASS FILTER CIRCUIT BOARD.  
 1001-1099 PARTS MOUNTED ON THE INVERTER CIRCUIT BOARD.  
 1201-1299 PARTS MOUNTED ON THE POWER INTERFACE CIRCUIT BOARD.  
 1401-1499 PARTS MOUNTED ON THE MOTOR DRIVE CIRCUIT BOARD.  
 1901-1999 PARTS MOUNTED ON THE ALC CIRCUIT BOARD.

- ALL RESISTORS ARE 1/4-WATT, 5% TOLERANCE, UNLESS OTHERWISE NOTED. RESISTOR VALUES ARE IN OHMS (A-1000; M-1,000,000).
- CAPACITORS LESS THAN 1 ARE IN PF (PICOFARADS). ALL OTHER CAPACITORS ARE IN PFD (PICOFARADS) UNLESS OTHERWISE NOTED.
- ARROWS ON CONTROLS INDICATE CLOCKWISE ROTATION AS VIEWED FROM THE KNOB SIDE OF THE CONTROL.
- THIS SYMBOL INDICATES A POSITIVE DC VOLTAGE MEASURED WITH A HIGH IMPEDANCE VOLTMETER FROM THE POINT INDICATED TO CHASSIS GROUND (RECEIVE MODE, NO SIGNAL INPUT).
- THIS SYMBOL INDICATES A POSITIVE DC VOLTAGE MEASURED WITH A HIGH IMPEDANCE VOLTMETER FROM THE POINT INDICATED TO CHASSIS GROUND (TRANSMIT MODE).
- THIS SYMBOL INDICATES CIRCUIT BOARD GROUND.
- THIS SYMBOL INDICATES CHASSIS GROUND.
- THIS SYMBOL INDICATES A SOLDERED CONNECTION TO A CIRCUIT BOARD.
- THIS SYMBOL INDICATES A PLUG AND SOCKET.
- SEE YOUR "SERVICE MANUAL" FOR WAVEFORMS.
- REFER TO THE "CIRCUIT BOARD X-RAY VIEWS" FOR THE PHYSICAL LOCATION OF PARTS.
- THIS SYMBOL WITH A NUMBER CORRESPONDS TO A WAVEFORM SHOWN IN THE "WAVEFORM" SECTION OF THE SERVICE MANUAL (PAGE 144).



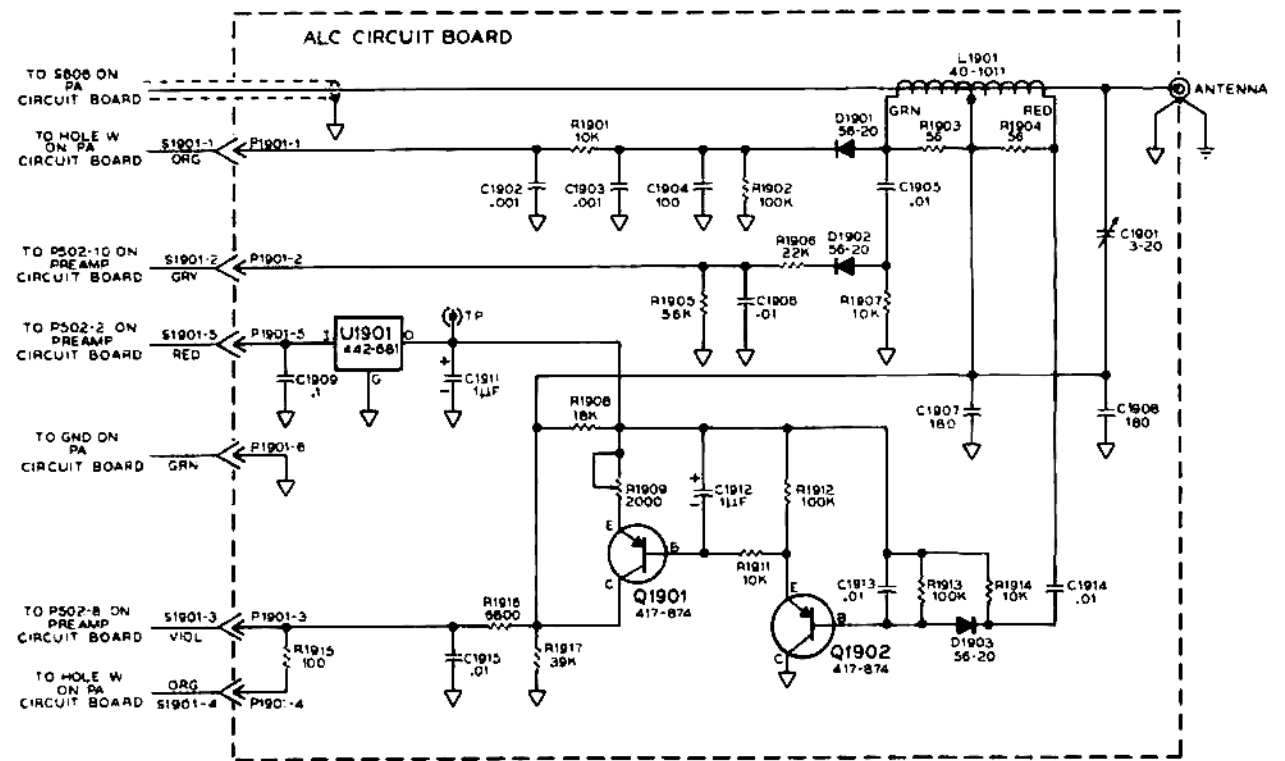
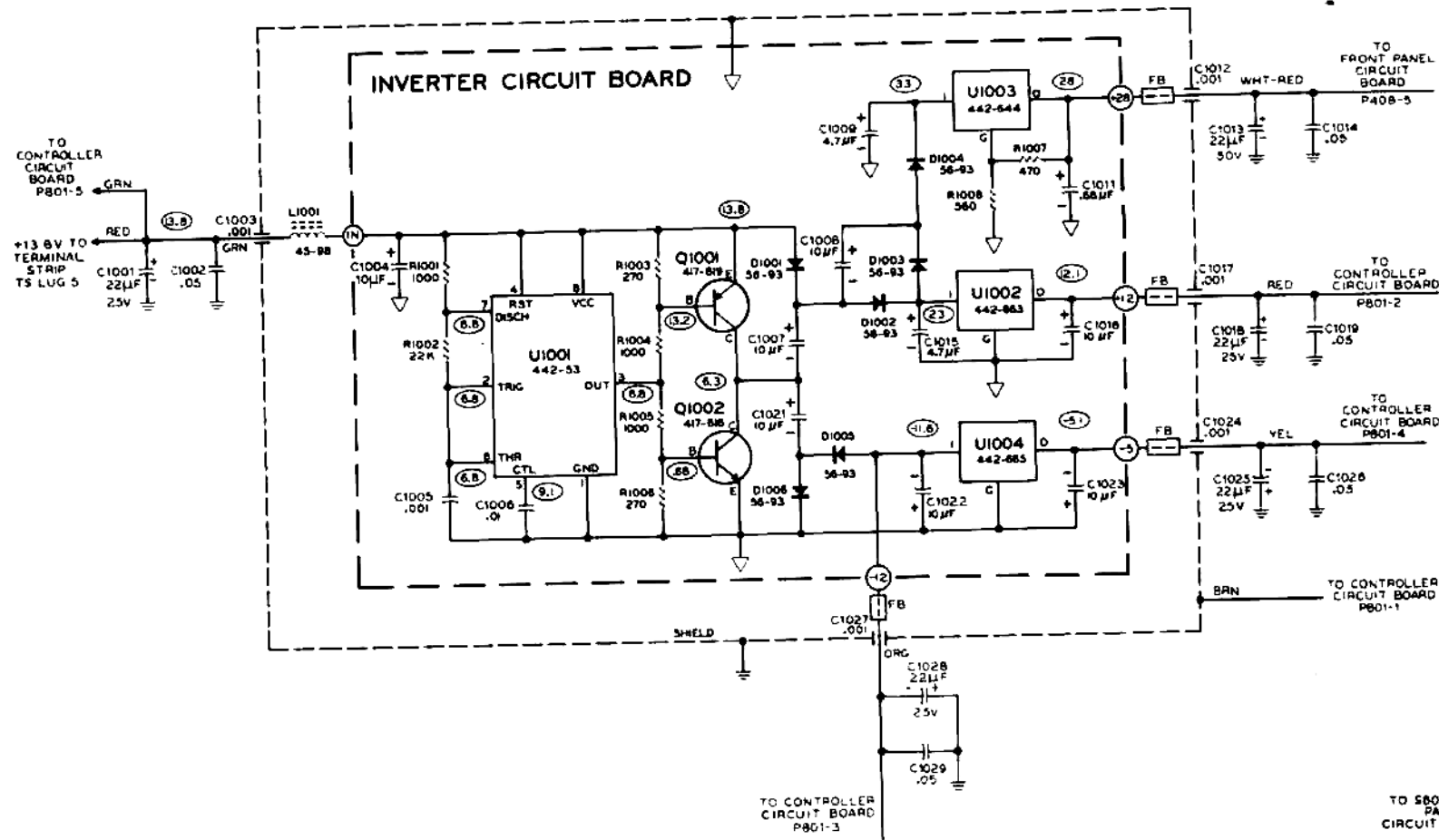
BANDPASS FILTER  
CIRCUIT BOARD

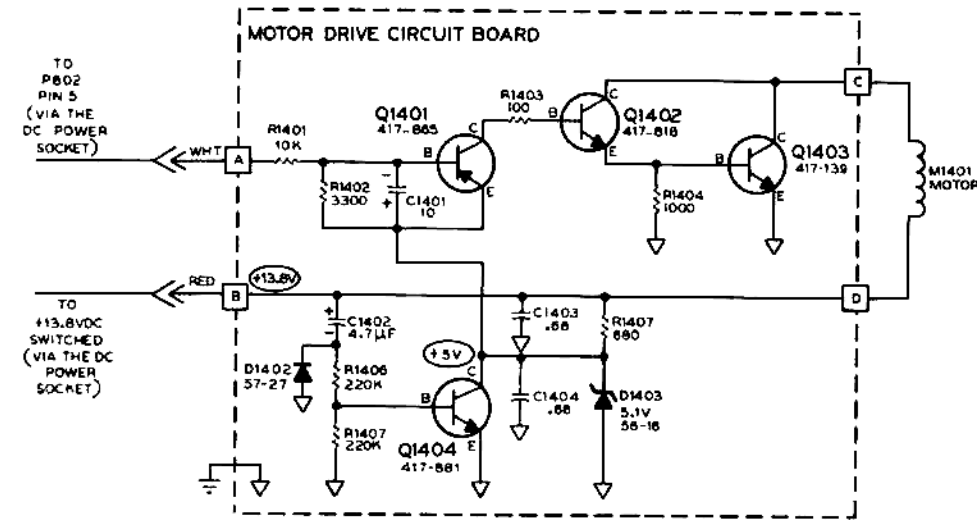
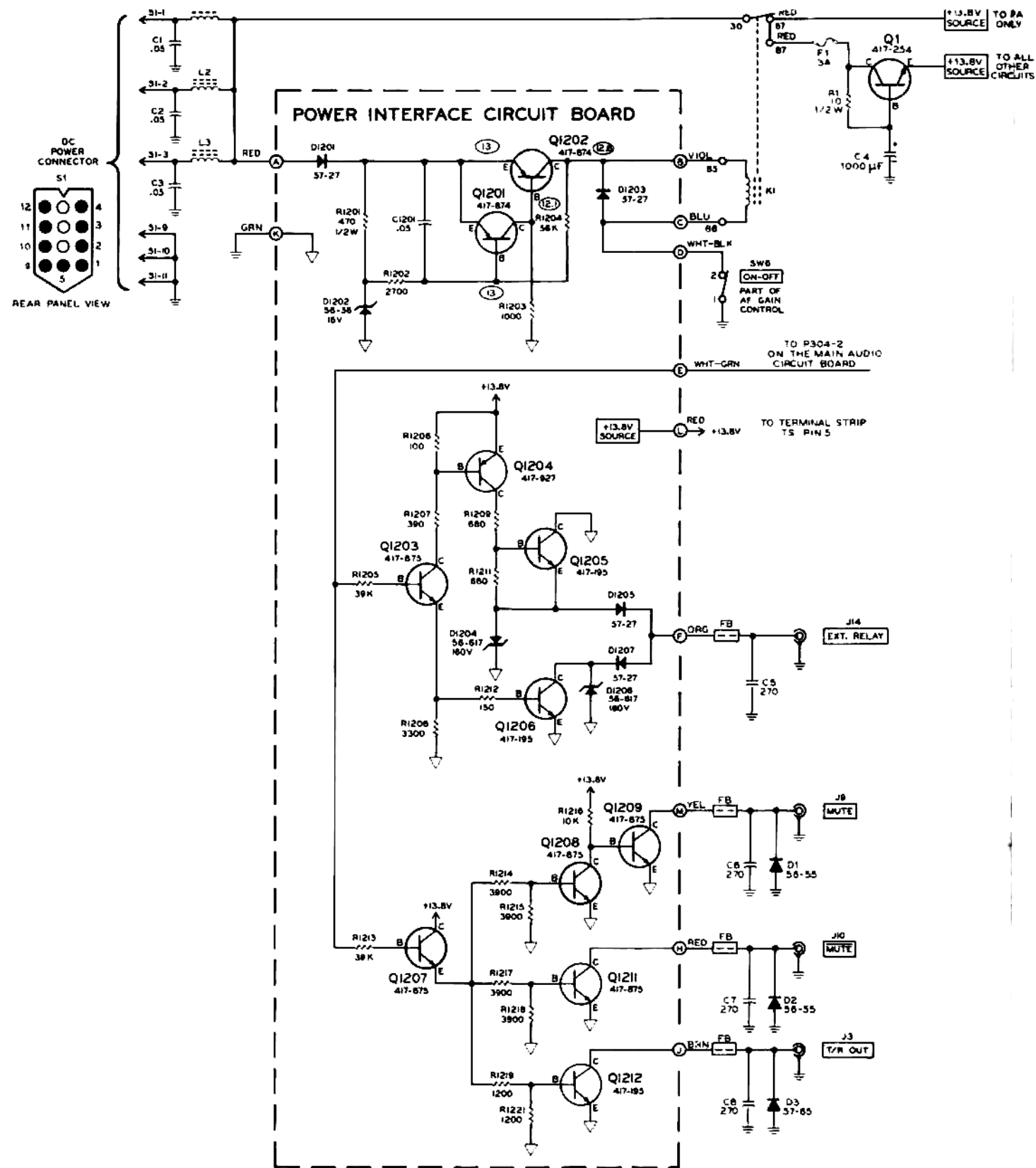




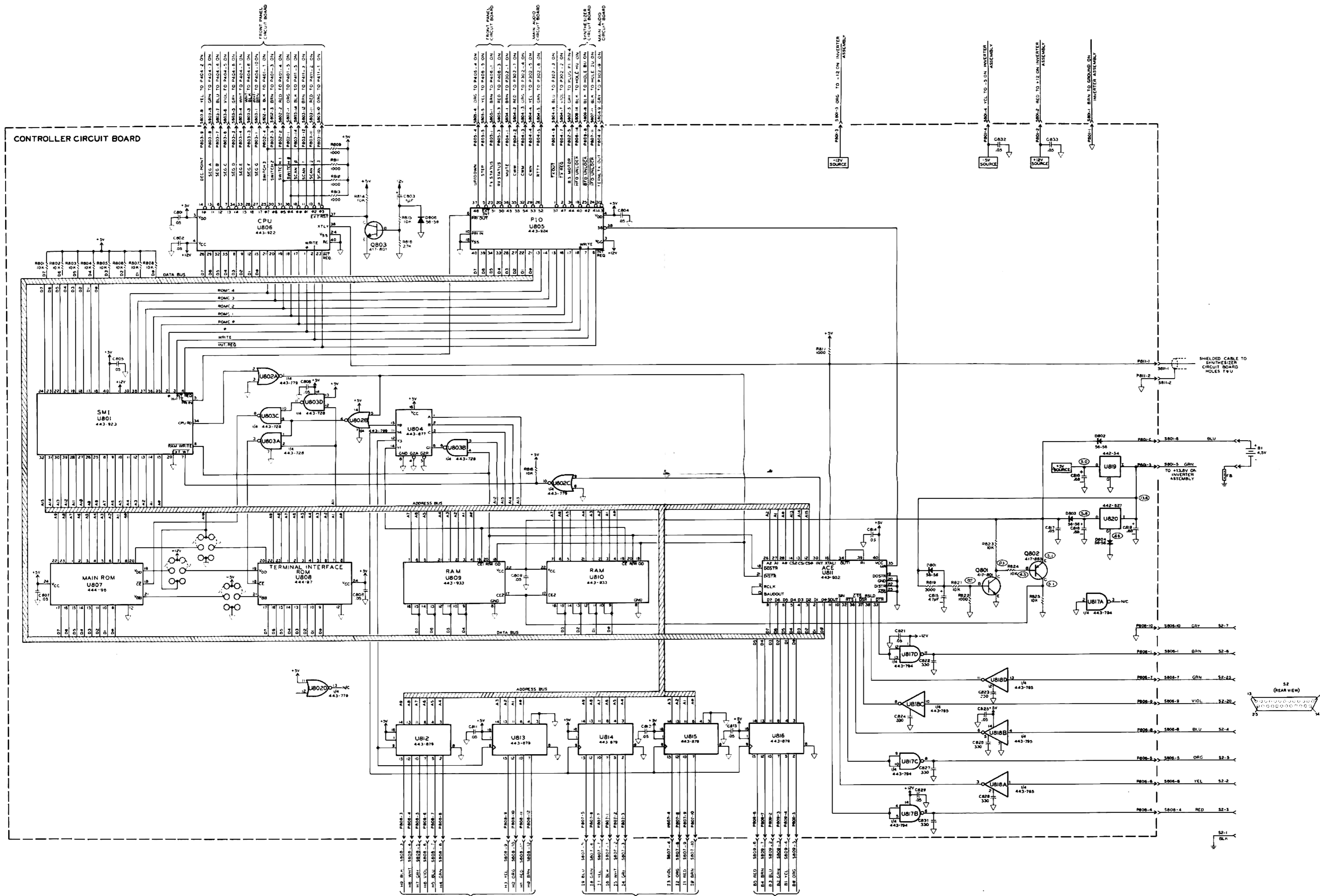
SS-900  
Part of 575-3  
Part 4 of 12

Copyright © 1983  
Heath Company  
All Rights Reserved  
Printed in the United States of America

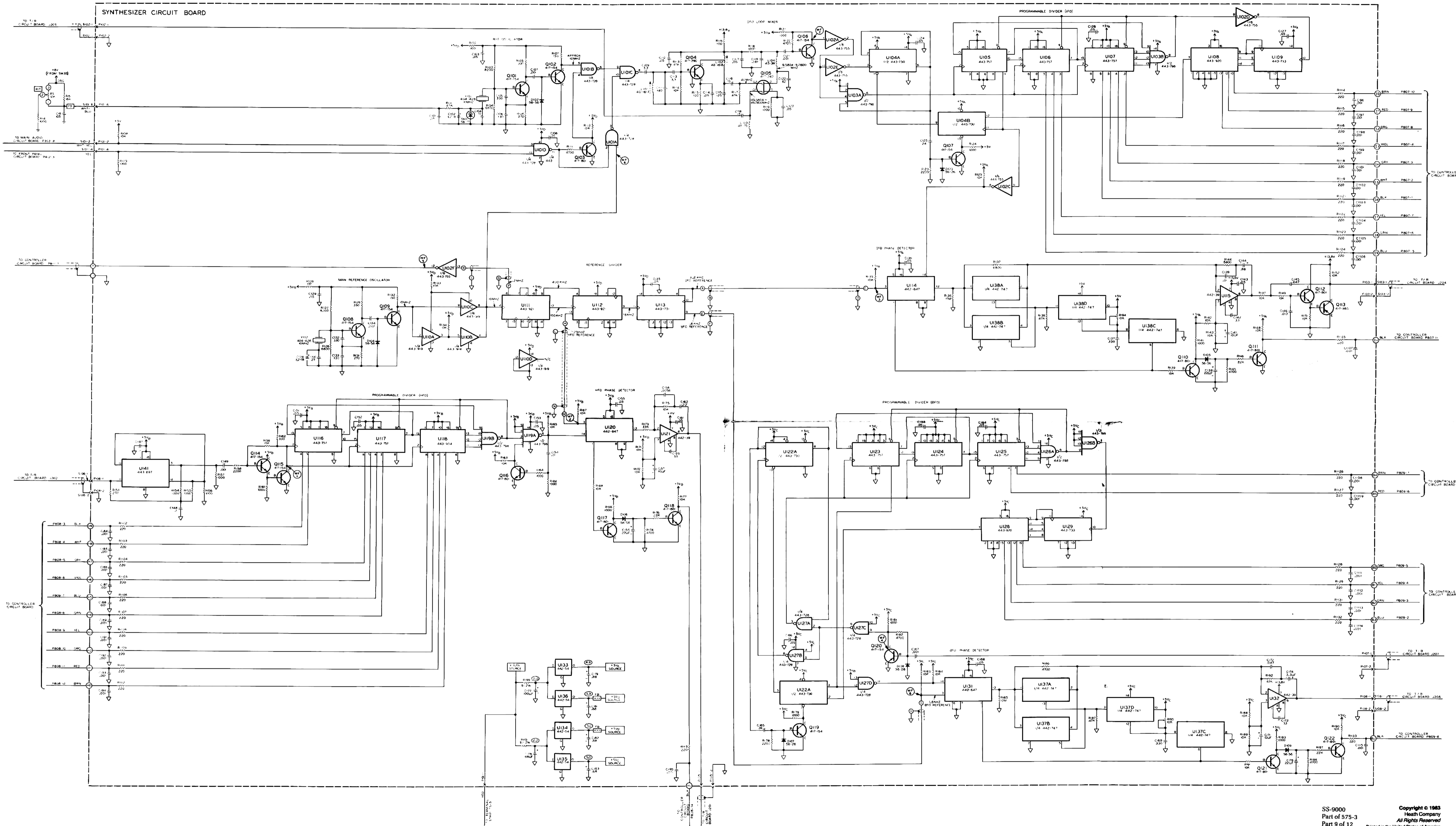


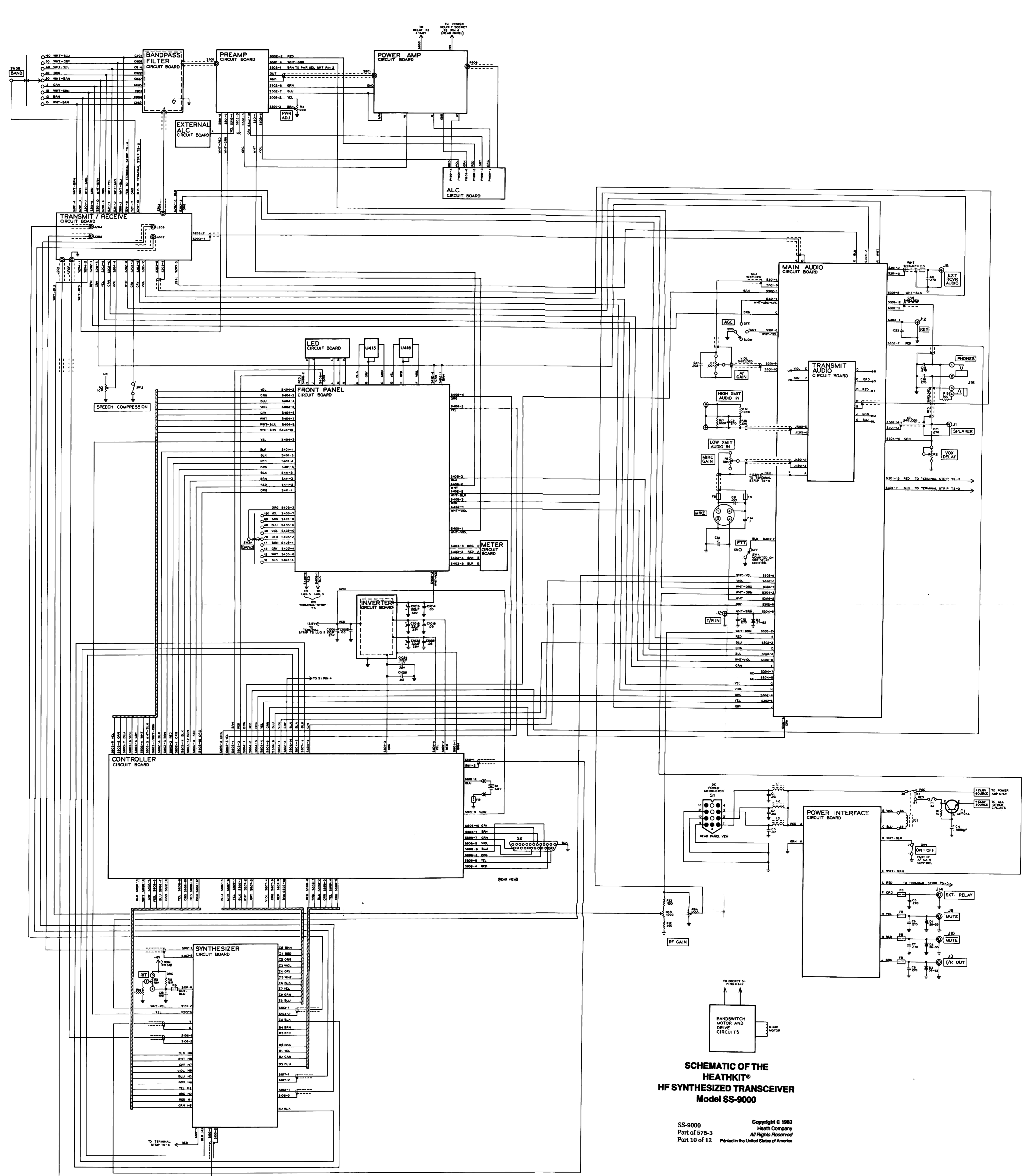




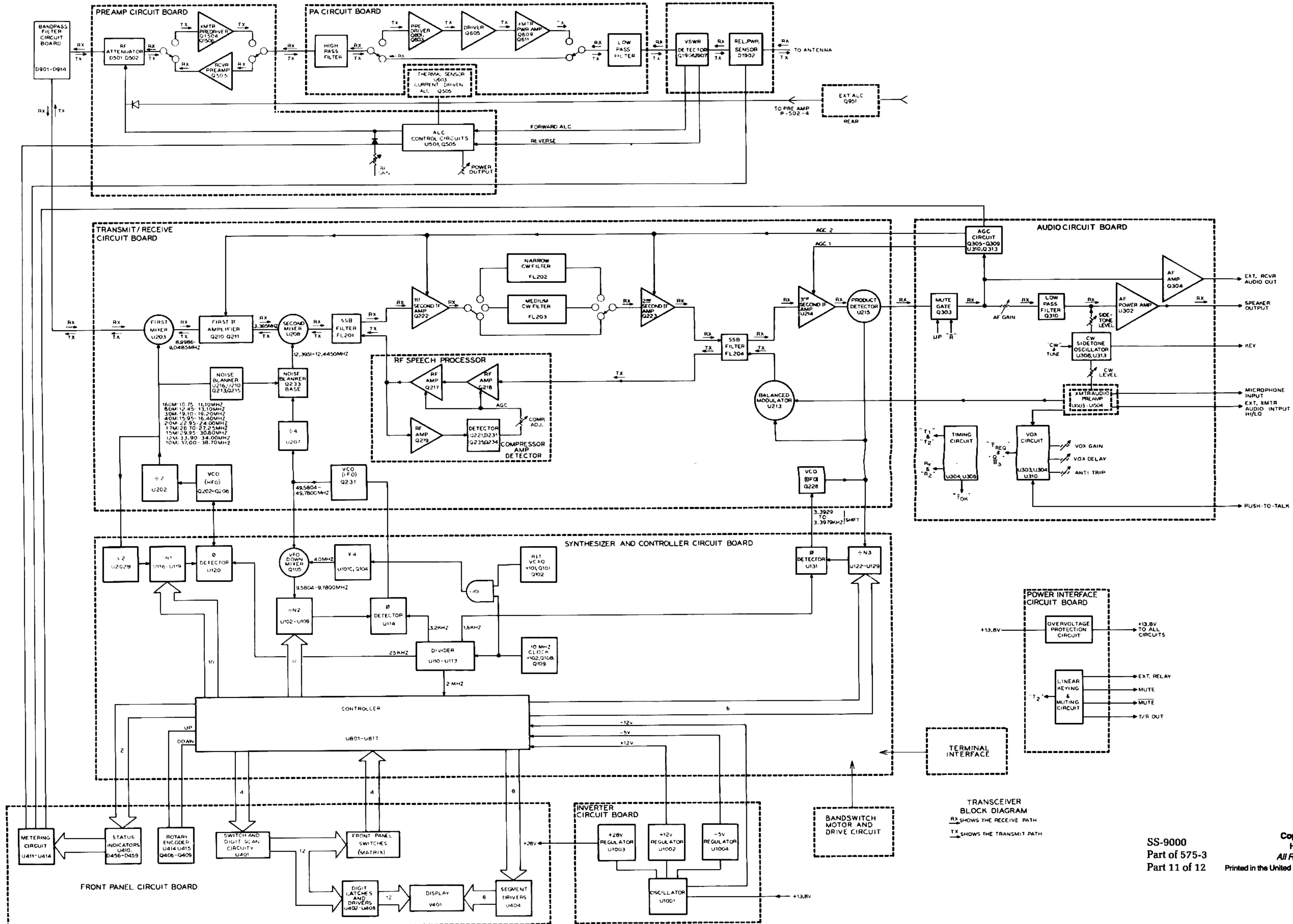








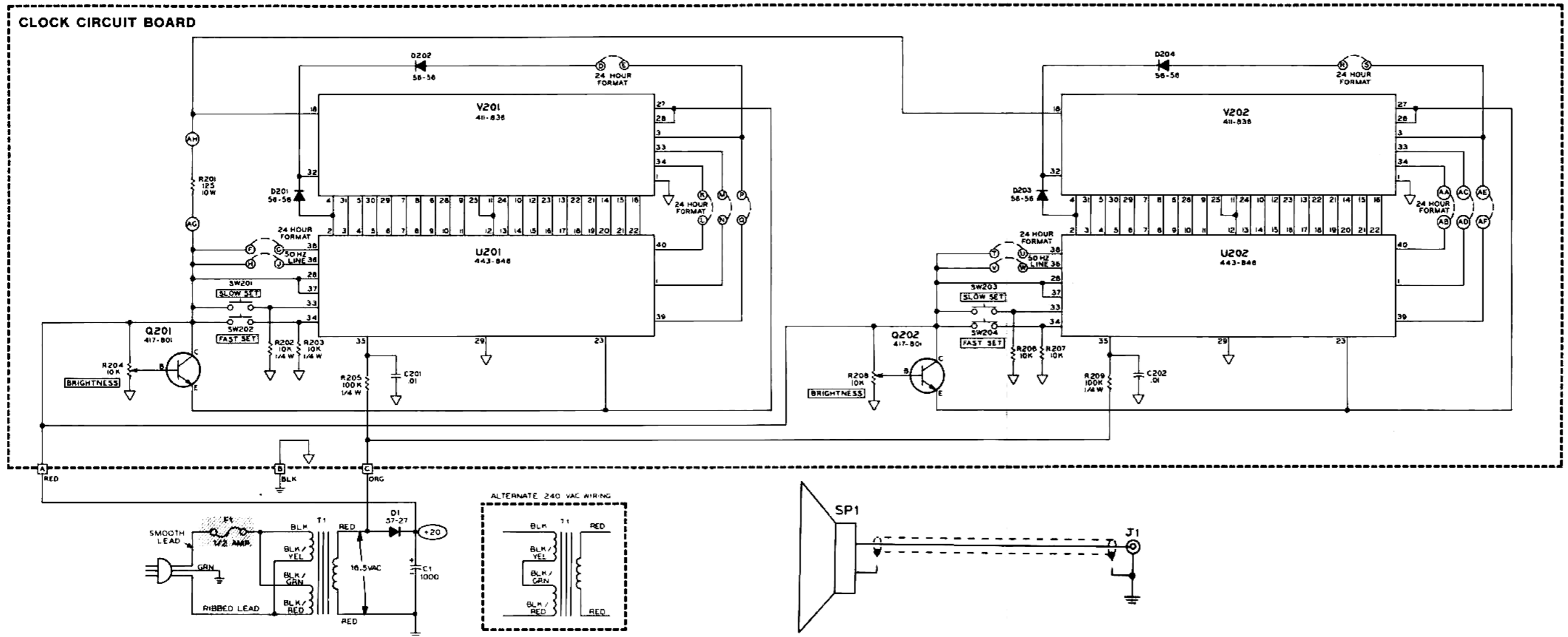
**SCHEMATIC OF THE  
HEATHKIT®  
HF SYNTHESIZED TRANSCEIVER  
Model SS-900**



TRANSCIVER  
BLOCK DIAGRAM  
RX SHOWS THE RECEIVE PATH  
TX SHOWS THE TRANSMIT PATH

SS-9000  
Part of 575-3  
Part 11 of 12

Copyright © 1983  
Heath Company  
All Rights Reserved  
Printed in the United States of America



**SCHEMATIC OF THE  
HEATHKIT®  
POWER SUPPLY/SPEAKER/  
DUAL CLOCK  
MODEL PS-9000**

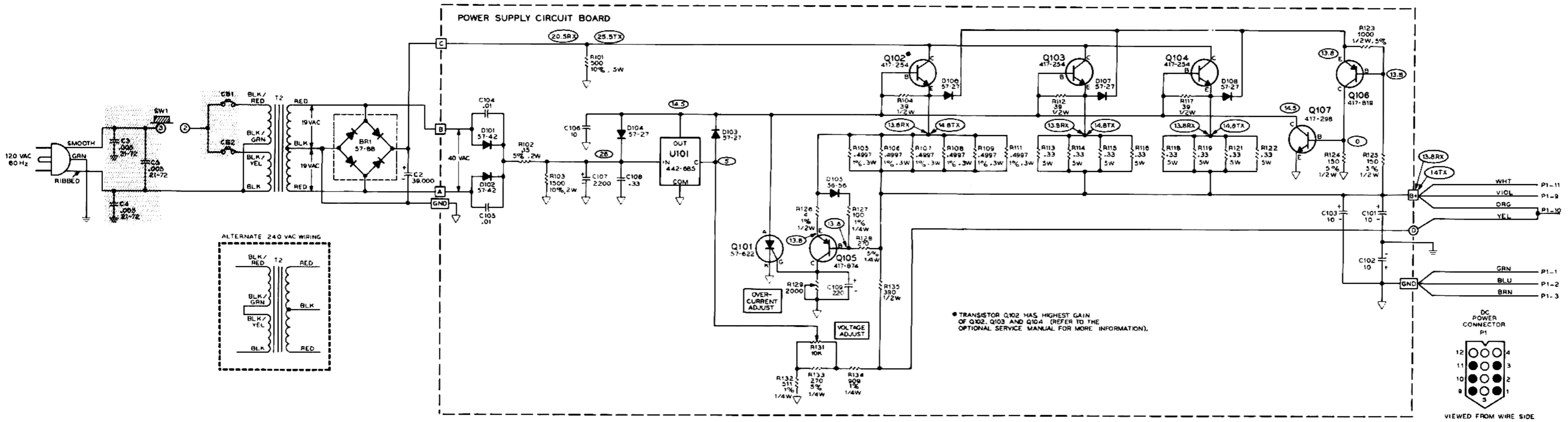
- COMPONENT NUMBERS ARE IN THE FOLLOWING GROUPS:  
1-99 CHASSIS MOUNTED PARTS.  
100-199 PARTS MOUNTED ON THE POWER SUPPLY CIRCUIT BOARD.  
200-299 PARTS MOUNTED ON THE CLOCK CIRCUIT BOARD.
- ALL RESISTORS ARE IN OHMS (K= 1000).
- ALL CAPACITORS ARE IN µF.
- THIS SYMBOL WITH A LETTER IN IT INDICATES A WIRE CONNECTION TO THE CIRCUIT BOARD.
- THIS SYMBOL INDICATES CIRCUIT BOARD GROUND.
- THIS SYMBOL INDICATES CHASSIS GROUND.
- THIS SYMBOL WITH A NUMBER IN IT INDICATES THE DC VOLTAGE TO CHASSIS GROUND FROM THE POINT INDICATED. READINGS SHOULD BE VALID FOR ALL NORMAL POWER SUPPLY OPERATING CONDITIONS.
- COMPONENTS IN THE SHADED AREAS ARE CRITICAL TO CONTINUED PRODUCT SAFETY. REPLACE THEM ONLY WITH PARTS OF THE SAME RATING OR WITH PROPER HEATH REPLACEMENT PARTS.
- THE CLOCKS MAY BE INDIVIDUALLY CHANGED TO INDICATE IN A 12-HOUR FORMAT. TO CHANGE THE CLOCKS, REMOVE OR CUT THE FOLLOWING JUMPER WIRES:

a. LEFT-HAND CLOCK

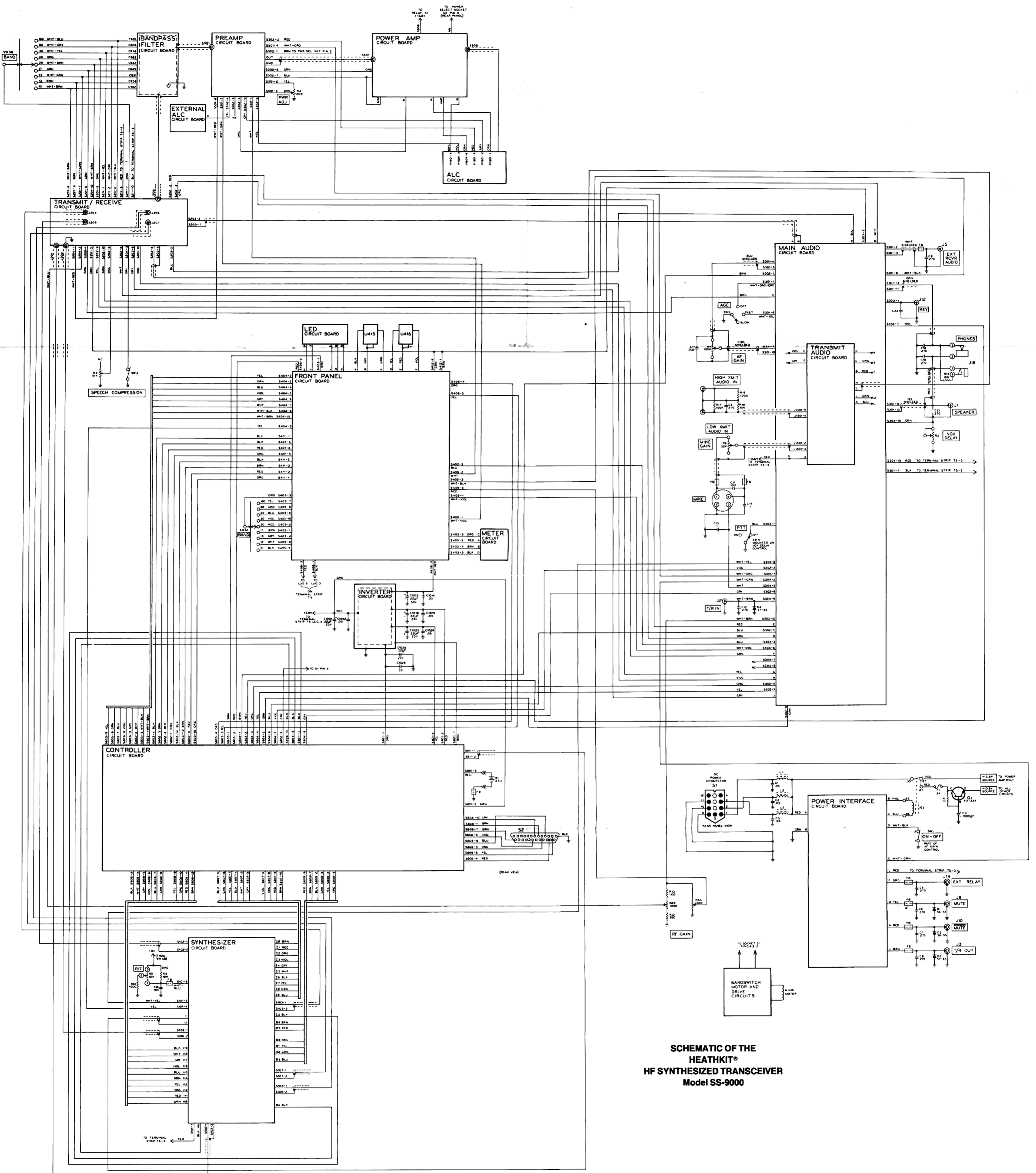
- K TO L
- M TO N
- P TO Q
- F TO G
- D TO E

b. RIGHT-HAND CLOCK

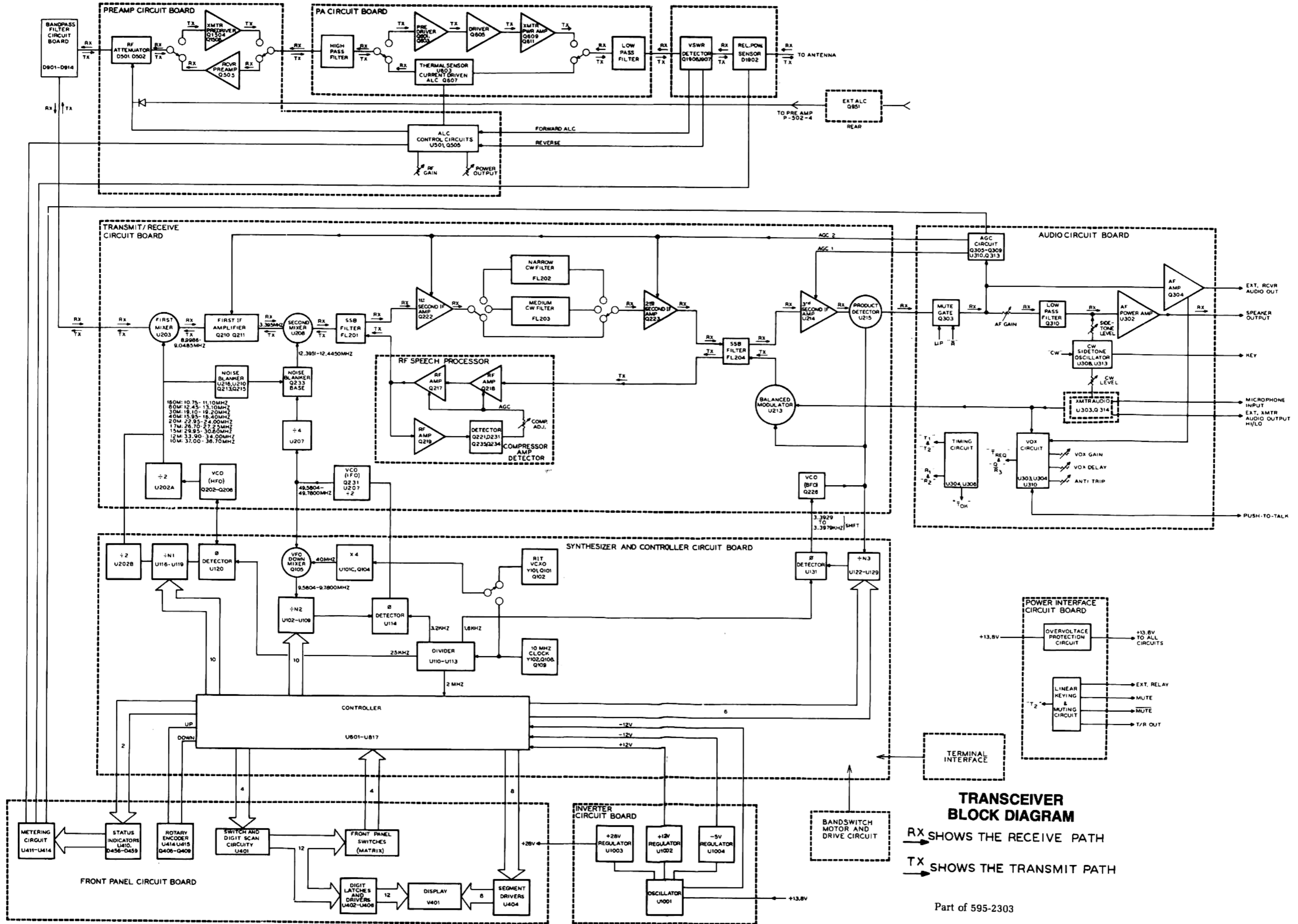
- AA TO AB
- AC TO AD
- AE TO AF
- R TO S
- T TO U



Copyright © 1982  
HEATH COMPANY  
All Rights Reserved  
Printed in the United States of America



**SCHEMATIC OF THE  
HEATHKIT®  
HF SYNTHESIZED TRANSCEIVER  
Model SS-9000**



**TRANSCIVER BLOCK DIAGRAM**  
 RX SHOWS THE RECEIVE PATH  
 TX SHOWS THE TRANSMIT PATH