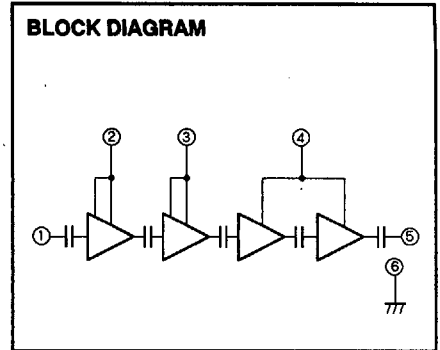
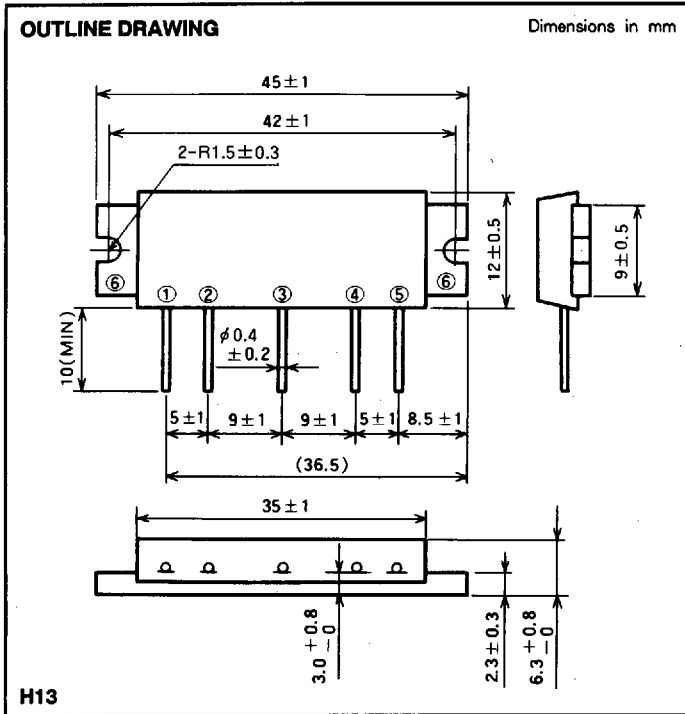


M67732

1240-1300MHz, 7.2V, 1W, FM PORTABLE RADIO



- PIN :**
- ① Pin : RF INPUT
 - ② Vcc1 : 1st. DC SUPPLY
 - ③ Vcc2 : 2nd. DC SUPPLY
 - ④ Vcc3 : 3rd. DC SUPPLY
 - ⑤ Po : RF OUTPUT
 - ⑥ GND : FIN

ABSOLUTE MAXIMUM RATINGS (Tc = 25°C unless otherwise noted)

Symbol	Parameter	Conditions	Ratings	Unit
Vcc1, 2	Supply voltage		9	V
Vcc3			16	V
Icc			1.5	A
P _{in(max)}	Input power	Vcc1 ≤ 8V, Z _G = Z _L = 50 Ω	10	mW
P _{O(max)}	Output power	Z _G = Z _L = 50 Ω	3	W
T _{C(OP)}	Operation case temperature		- 20 to 100	°C
T _{stg}	Storage temperature		- 40 to 110	°C

Note. Above parameters are guaranteed independently.

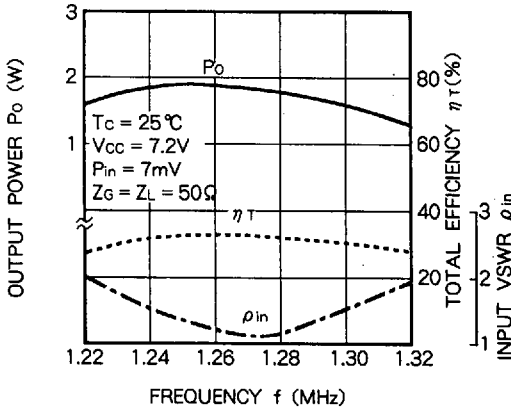
ELECTRICAL CHARACTERISTICS (Tc = 25°C unless otherwise noted)

Symbol	Parameter	Test conditions	Limits		Unit
			Min	Max	
f	Frequency range	Vcc1 = Vcc2 = Vcc3 = 7.2V P _{in} = 7mW Z _G = Z _L = 50 Ω	1240	1300	MHz
P _O	Output power		1		W
η _T	Total efficiency		25		%
2f _o	2nd. harmonic			- 30	dBc
ρ _{in}	Input VSWR			3.5	-
-	Load VSWR tolerance	Vcc1 = Vcc2 = 9V, Vcc3 = 15V P _O = 2W(P _{in} : controlled) Load VSWR = 10 : 1(All phase), Z _G = 50 Ω	No degradation or destroy		-

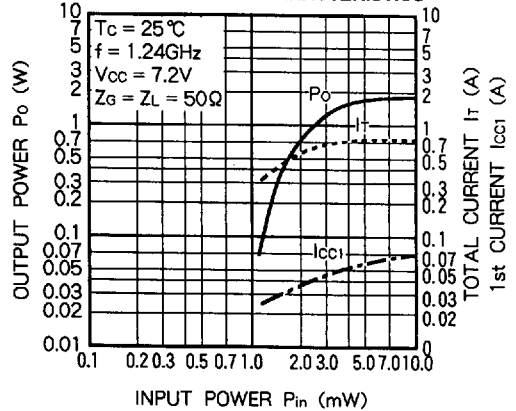
Note. Above parameters, ratings, limits and conditions are subject to change.

TYPICAL PERFORMANCE DATA

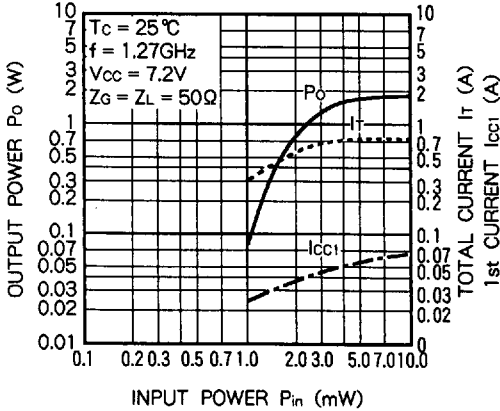
OUTPUT POWER, TOTAL EFFICIENCY, INPUT VSWR VS. FREQUENCY CHARACTERISTICS



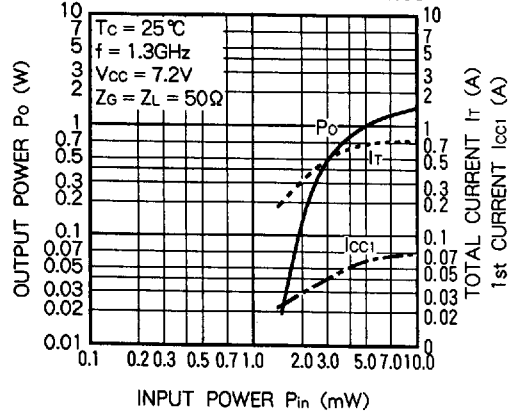
OUTPUT POWER, TOTAL CURRENT, 1st CURRENT VS. INPUT POWER CHARACTERISTICS



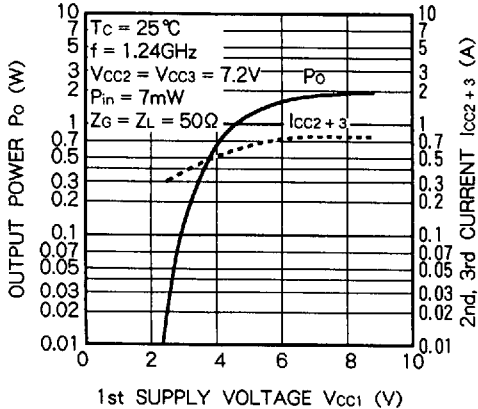
OUTPUT POWER, TOTAL CURRENT, 1st CURRENT VS. INPUT POWER CHARACTERISTICS



OUTPUT POWER, TOTAL CURRENT, 1st CURRENT VS. INPUT POWER CHARACTERISTICS



OUTPUT POWER, 2nd, 3rd CURRENT VS. 1st SUPPLY VOLTAGE CHARACTERISTICS



OUTPUT POWER, 2nd, 3rd CURRENT VS. 1st SUPPLY VOLTAGE CHARACTERISTICS

