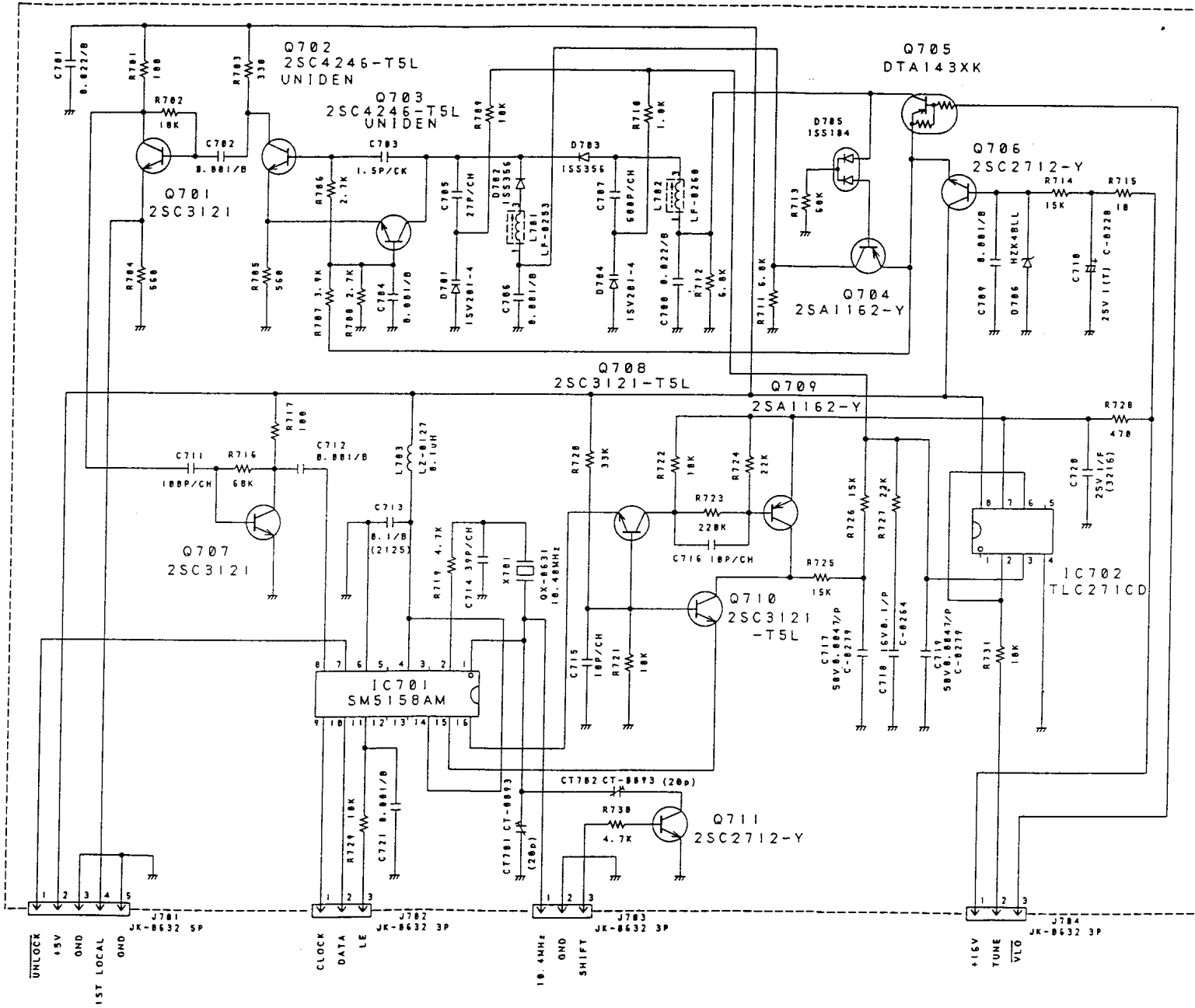


1. RESISTANCE VALUES ARE SHOWN IN OHMS UNLESS OTHERWISE NOTED.
2. RESISTOR WATTAGE ARE 1/10W UNLESS OTHERWISE NOTED.
3. CAPACITANCE VALUES ARE INDICATED IN MICRO FARADS UNLESS OTHERWISE NOTED.
(P=PICO-MICRO FARADS)
4. ALL ELECTRIC CAPACITORS APPROVAL NO. IS C-130 UNLESS OTHERWISE NOTED.
5. CHIP PARTS ARE NOT SPECIFIED IN THIS SCHEMATIC DIAGRAM. PLEASE REFER TO THE PARTS LIST FOR THE CHIP PARTS. RESISTOR

DESIGN	DRWN BY	TITLE	MAIN PCB
96.2.24	96.9.5	SCHEMATIC DIAGRAM	
Y. TAKAYAMA	HOSHI	APPROVED BY	AECEM
CHECK BY	APPD BY	DATE	UNIDEN CORP.

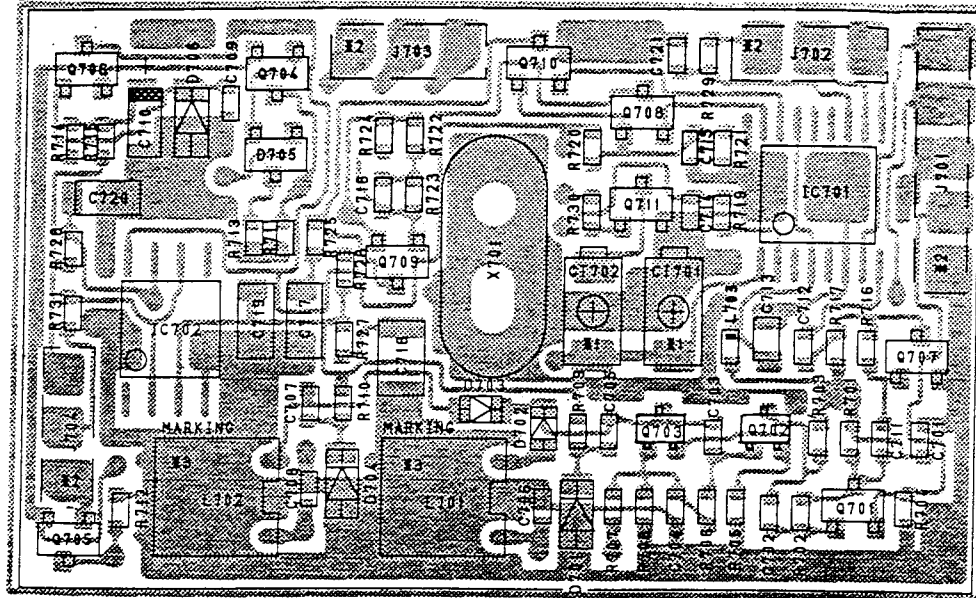


NOTES:

1. RESISTANCE VALUES ARE SHOWN IN OHMS UNLESS OTHERWISE NOTED. (K=KILO OHM, M=MEG OHM)
2. RESISTOR WATTAGES ARE [1/16W] UNLESS OTHERWISE NOTED.
3. CAPACITANCE VALUES ARE INDICATED IN MICRO FARADS UNLESS OTHERWISE NOTED. (P=MICRO-MICRO FARAD)
4. CHIP CAPACITOR'S SIZES ARE (1608) TYPE UNLESS OTHERWISE NOTED.

DESIGN	DRAWN BY	AE GGM
'95.9.27	'96.9.5	
KUROKI	Y. HOSHI	TITLE PLL PCB SCHEMATIC DIAGRAM
CHECK BY	APPRO BY	DRAWING No.
REV. No.		UNIDEN CORP.

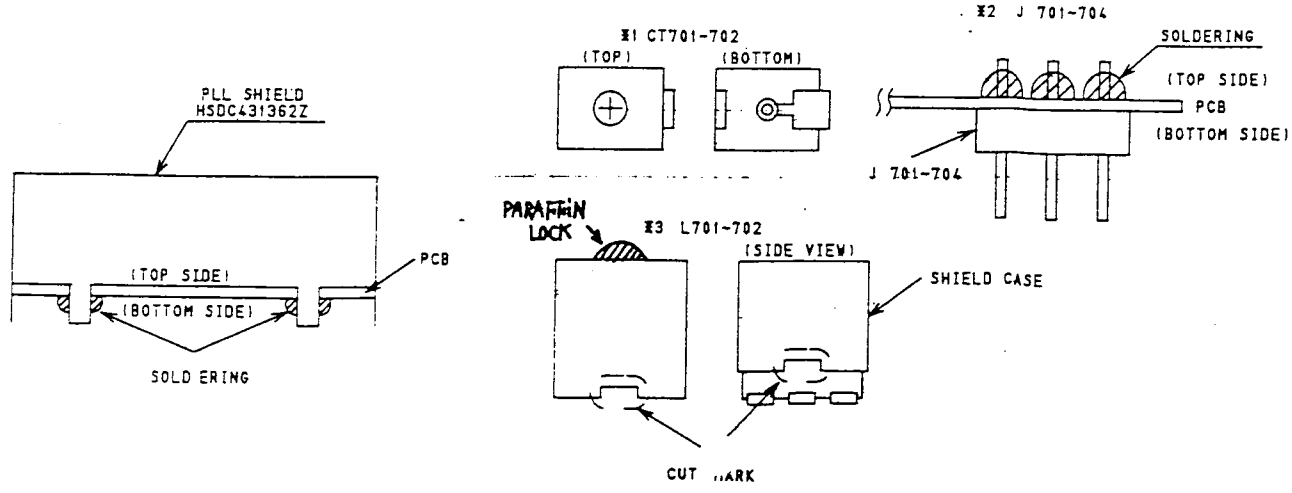
B701 PH-1828A (TOP VIEW)



C701	0.022/B
C702	0.001/B
C703	1.5P/CK
C704	0.001/B
C705	27P/CH
C706	0.001/B
C707	680P/CH
C708	0.022/B
C709	0.001/B
C710	25V1 C-228
C711	100P/CH
C712	0.001/B
C713	0.1/B (12125)
C714	39P/CH
C715	10P/CH
C716	10P/CH
C717	0.0047/PS8YIC-2791
C718	0.1/P 16Y (C-264)
C719	0.0047/PS8YIC-2791
C720	1/F 25V 32161
C721	0.001/B
IC701	SMS158AM
IC702	TLC271CD
L701	LF253
L702	LF260
L703	LZ-127 0.1MH

R701	100
R702	18K
R703	330
R704	560
R705	560
R706	2.7K
R707	3.9K
R708	2.7K
R709	10K
R710	1.8K
R711	6.8K
R712	6.8K
R713	58K
R714	15K
R715	10
R716	68K
R717	180
R719	4.7K
R720	33K
R721	10K
R722	10K
R723	220K
R724	22K
R725	15K
R726	15K
R727	22K
R728	470
R729	10K
R730	4.7K
R731	10K
X701	QX-631 10.40MHZ

Q701	25C3121
Q702	25A1162-Y UNIDEN
Q703	25A1162-Y UNIDEN
Q704	25A1162-Y
Q705	DTA143XK
Q706	25C2712-Y
Q707	25C3121
Q708	25C3121-T5L
Q709	25A1162-Y
Q710	25C3121-T5L
Q711	25C2712-Y
D701	15V201-4
D702	15S356
D703	15S356
D704	15V201-4
D705	15S184
D706	HZX4BLL
J 701	JK632 (5P)
J 702	JK632 (3P)
J 703	JK632 (3P)
J 704	JK632 (3P)
CT701	20P CT-093
CT702	20P CT-093

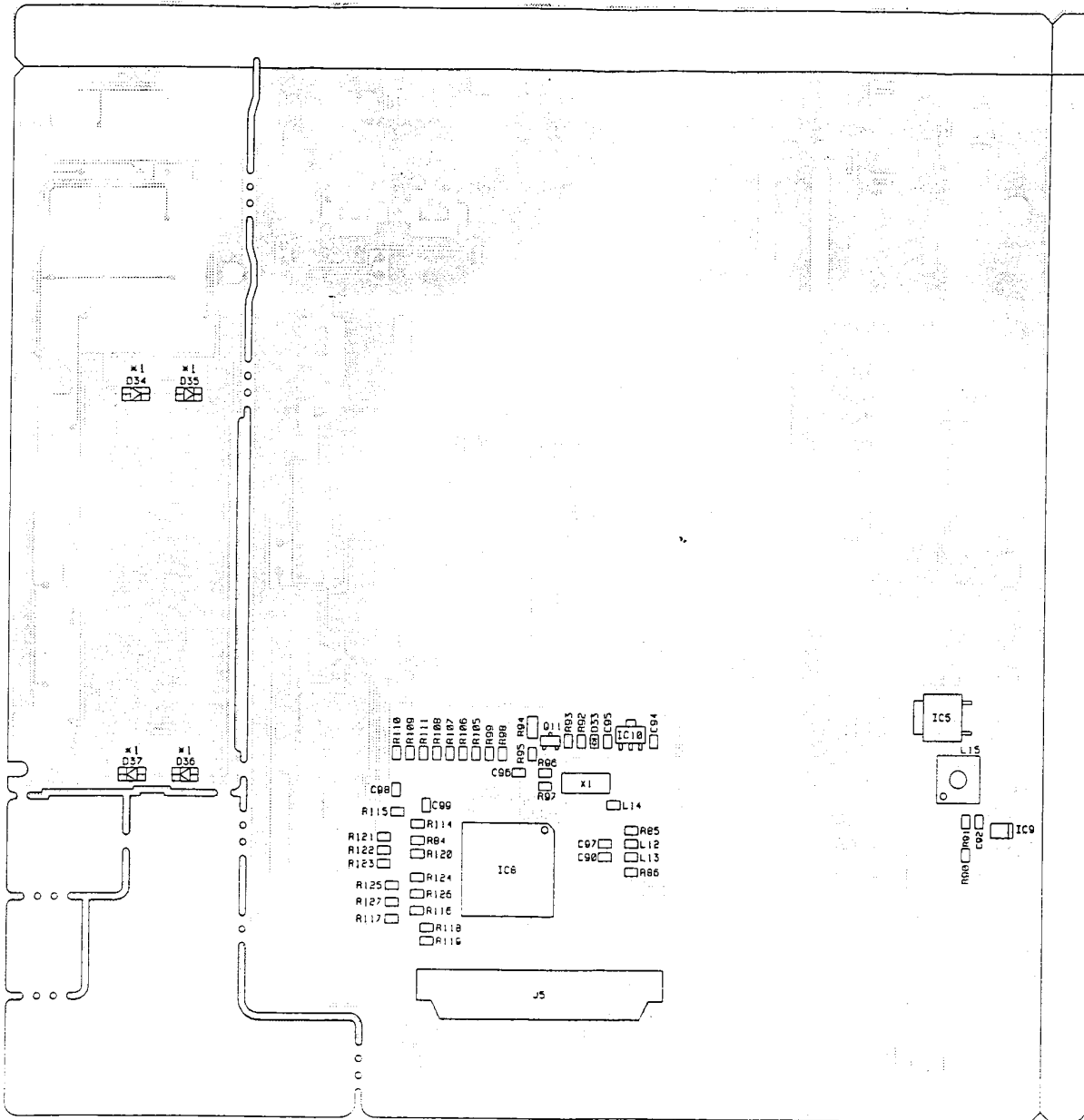
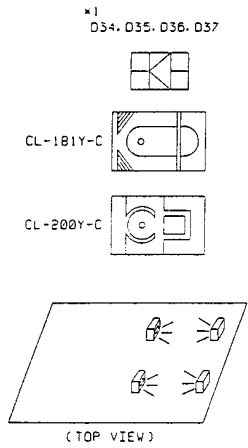


- NOTES:
1. RESISTANCE VALUES ARE SHOWN IN OHMS UNLESS OTHERWISE NOTED. (K=KILO OHM, M=MEG OHM)
 2. RESISTOR WATTAGES ARE 1/16W UNLESS OTHERWISE NOTED.
 3. CAPACITANCE VALUES ARE INDICATED IN MICRO FARADS UNLESS OTHERWISE NOTED. (P=PICO-MICRO FARAD)
 4. ALL CAPACITORS TEMPERATURE CHARACTERISTICS ARE CH UNLESS OTHERWISE NOTED.

DESIGN BY	Y. HOSHI	DRAWN BY	AE GGM
DATE	'96.7.15	DATE	'96.7.14
CHECK BY	Y. HOSHI	TITLE	PLL PCB PARTS ASSEMBLY TOP VIEW
APPRO. BY		DRAWING NO.	E23-13507
REV. NO.			UNIDEN CORP.

参考資料
REF. ONLY

B001 PH-223AA (TOP VIEW)



C90	0.1/B
C92	0.022/B
C94	0.001/B
C95	0.1/B
C96	0.1/B
C97	0.1/B
C98	0.001/B
C99	100P/CH

D33	1SS355
D34	CL-181Y-C
D35	CL-181Y-C
D36	CL-181Y-C
D37	CL-181Y-C

IC5	L78M05T
IC6	UC1888
IC9	TK11817M
IC10	RH5VL40CA

J5	JK-843 (30P)
----	--------------

L12	600 LZ-120
L13	600 LZ-120
L14	600 LZ-120
L15	1.2 μ H LZ-077

Q11	2SC2712-Y
-----	-----------

R84	1K
R85	1K
R86	10K
R80	560
R81	1K
R82	68K
R83	68K

R84	100K (1/8W)
R85	1K
R86	5.6K
R87	1M
R88	2.2K
R89	2.2K
R105	2.2K
R106	2.2K
R107	2.2K
R108	2.2K
R109	10K
R110	10K
R111	2.2K
R114	2.2K
R115	2.2K
R116	2.2K
R117	2.2K
R118	2.2K
R119	2.2K
R120	2.2K
R121	2.2K
R122	2.2K
R123	2.2K
R124	2.2K
R125	2.2K
R126	2.2K
R127	2.2K

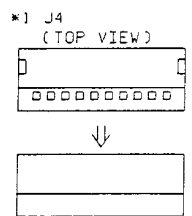
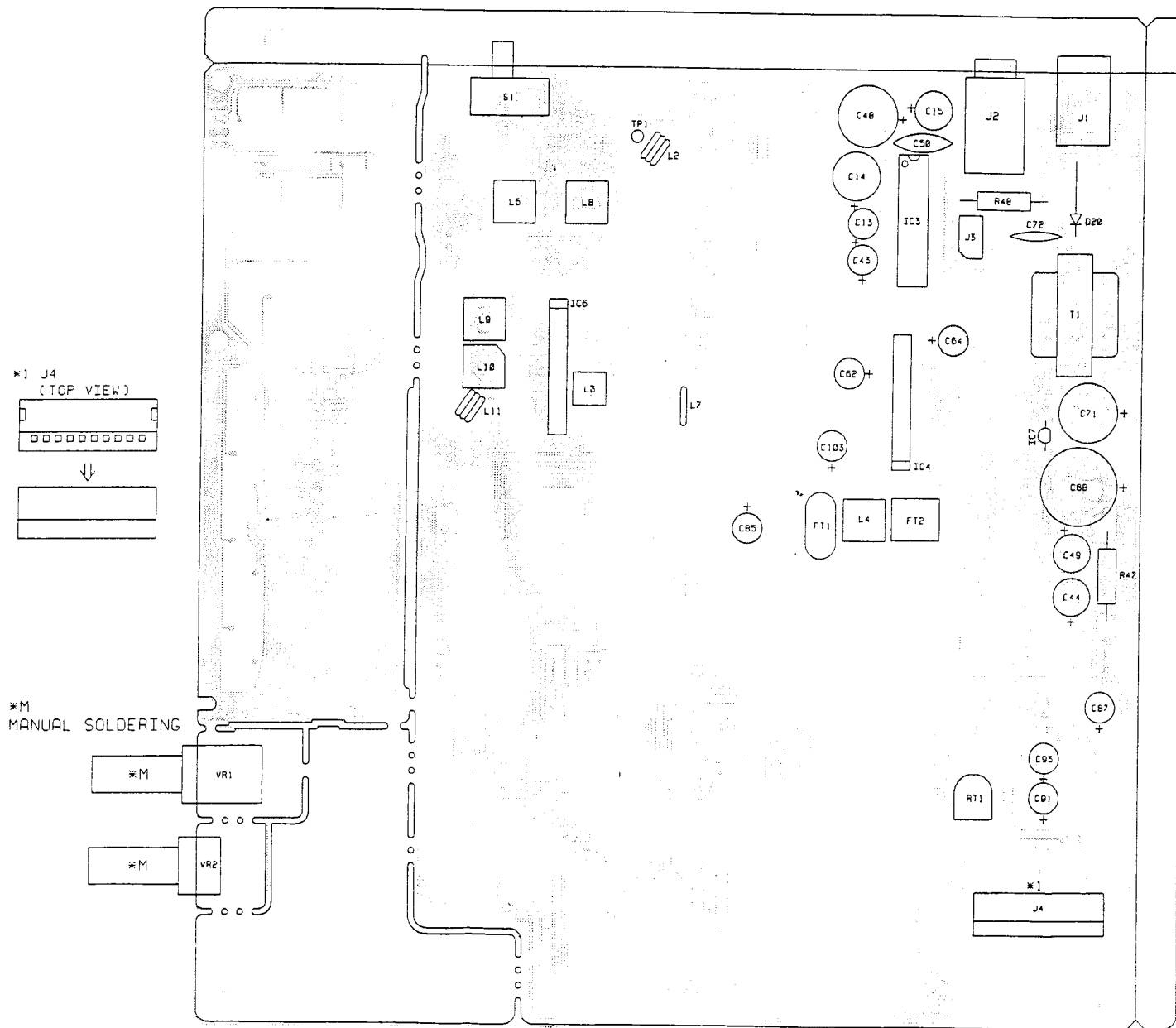
X1	FK-009 4.0MHz
----	---------------

参考資料
REF. ONLY

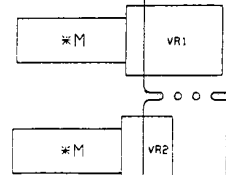
- NOTES:
1. RESISTANCE VALUES ARE SHOWN IN OHMS UNLESS OTHERWISE NOTED. (K=KILO OHM, M=MEG OHM)
 2. RESISTOR WATTAGES ARE 1/10W UNLESS OTHERWISE NOTED.
 3. CAPACITANCE VALUES ARE INDICATED IN MICRO FARADS UNLESS OTHERWISE NOTED. (P=MICRO-MICRO FARAD)
 4. ALL CAPACITORS SIZE ARE 2125 UNLESS OTHERWISE NOTED.
 5. CHIP PARTS ARE NOT SPECIFIED IN THIS DRAWING FOR THE CHIP PARTS.

DESIGN BY	ORIGIN BY	AE GGM
DATE	DATE	11.9.5
Y. TAKA	Y. HOSHI	TITLE MAIN PCB
CHECK BY	APPROV BY	CHIP LAYOUT TOP VIEW
REV. NO.	DRAWING NO.	E22-13505
		UNITED CORP.

B001 PH-223AA (TOP VIEW)



*M MANUAL SOLDERING



C13	50V 1 C-130
C14	25V 220 C-130
C15	25V 100 C-130
C42	50V 10 C-130
C44	25V 100 C-130
C48	25V 470 C-130
C49	25V 100 C-130
C50	25V 0.1/YR
C62	50V 22 C-130
C64	50V 1 C-130
C66	5.5V 0.1F C-217
C71	25V 470 C-130
C72	50V 0.047/YF
C85	10V 100 C-130
C87	50V 10 C-130
C89	50V 4.7 C-130
C93	50V 4.7 C-130
C103	50V 3.3 C-130

D20	1W4003
FT1	FL-195
FT2	FL-200

IC3	TDA1905
IC4	LA1600A
IC6	LA1166N
IC7	M5278L56

J1	JK-790
J2	JK-899
J3	JK-276 (2P)
J4	JK-858 (10P)

L2	LE-127 2 1/2T
L3	LF-207
L4	LB-233
L6	LB-659
L7	LE-365 1/2T
L8	LB-797
L9	LB-656
L10	LC-226
L11	LE-127 2 1/2T

R47	10 1WS
R48	6.8 1WS

RT1	RT-552 100KB
-----	--------------

S1	SW-225
----	--------

T1	TF-374
----	--------

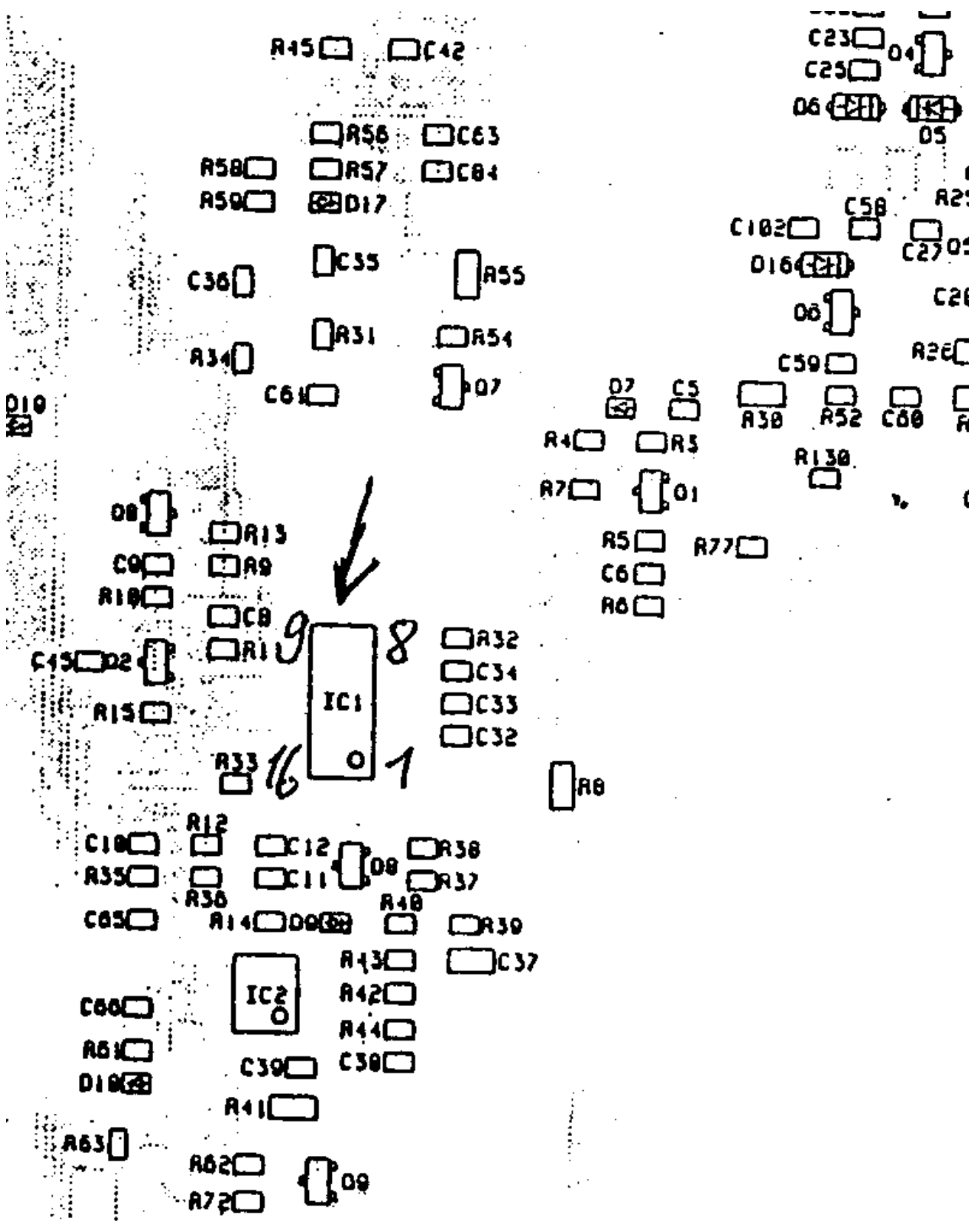
TP1	TP-118
-----	--------

VR1	RV-744 100KA
VR2	RV-717 100KA

参考資料
REF. ONLY

- NOTES:
1. RESISTANCE VALUES ARE SHOWN IN OHMS UNLESS OTHERWISE NOTED. (K-KILO OHM, M-MEG OHM)
 2. CAPACITANCE VALUES ARE INDICATED IN MICRA FARADS UNLESS OTHERWISE NOTED (P-MICRO-MICRA FARAD)

DESIGN BY	DRAWN BY	AE GGM
DATE	REV. 6.5	
Y. TAKA	Y. HOSHI	TITLE MAIN PCB
CHECK BY	APPROV BY	PARTS ASS'Y TOP VIEW
DATE	DRAWING NO.	E22-1350
REV. NO.		UNIDEN COF



Discriminator-
Anschluß
AE66U